

Panel Glide System

Product Information

Verosol's **Panel Glide System** combines the elegance of curtains with the functionality of blinds. Fabric panels fall vertically from the track giving the soft look and feel of a curtain. The fabric panels overlap to eliminate light gaps and can stack either right, left or to the centre. An ideal choice for sliding doors.

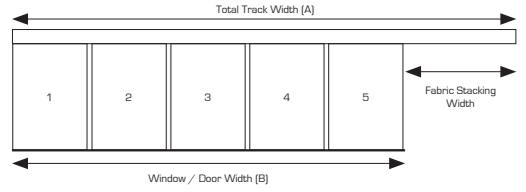
The Panel Glide System track can be operated by wand or cord, and is available in many different operating configurations. In conjunction with the various fabrics on offer, provides control of light, privacy and vision out.

Further Information

To find out more information phone Verosol Customer Care on 1800 721 404 or visit www.verosol.com.au



Technical Information

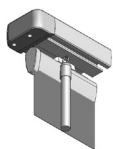
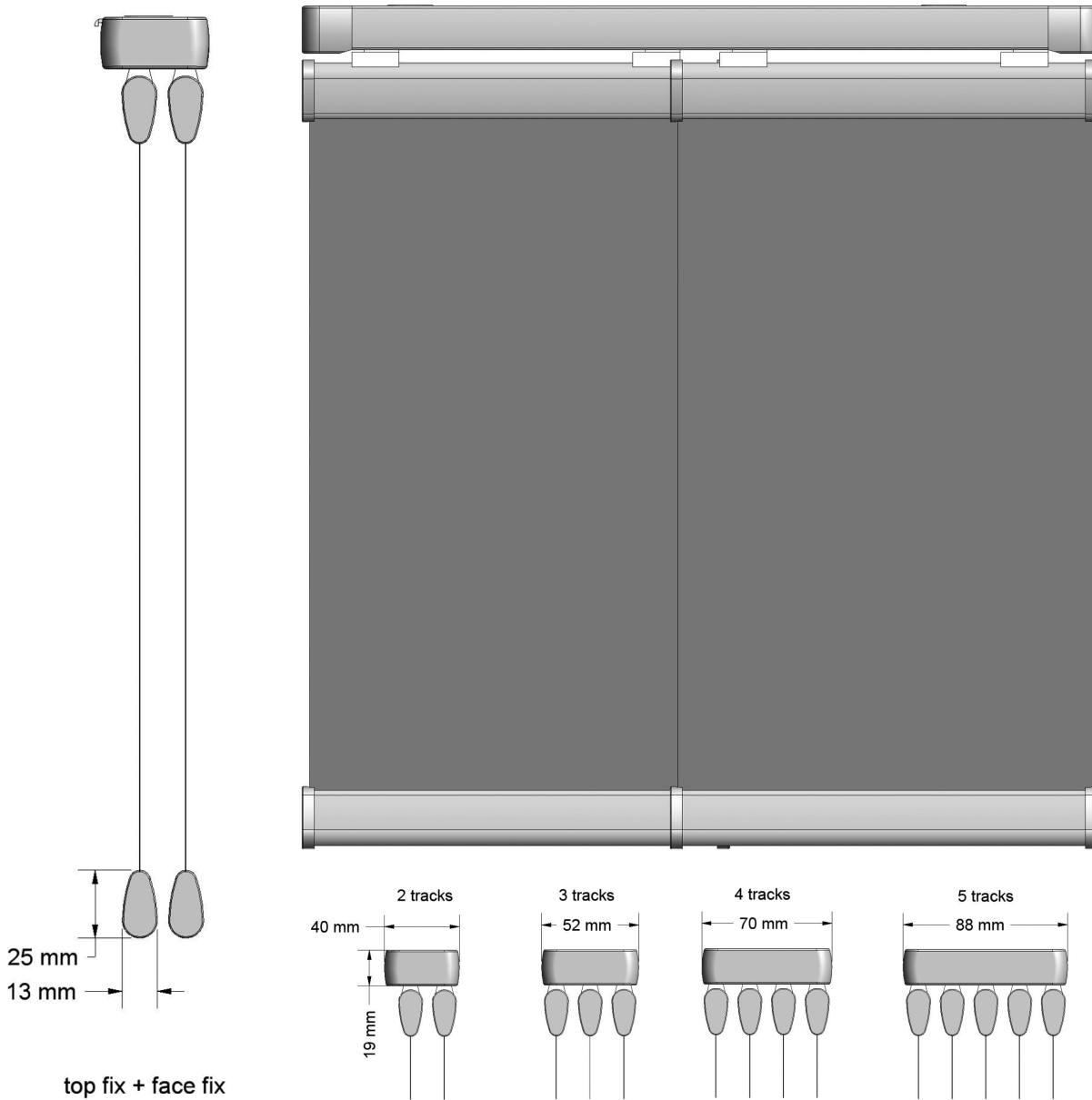
Product Code	G202.0	G203.0	G204.0	G205.0
Product Name	Panel Glide System	Panel Glide System	Panel Glide System	Panel Glide System
Operation	2 Track System	3 Track System	4 Track System	5 Track System
Rail and Rail Colour	Verosol's Panel Glide system is available as a 2, 3, 4, or 5 panel track system in clear anodised, white, black, or white birch powder coated finishes. Tracks can be custom powder coated for an additional charge			
Control and Configurations Options	There is an extensive range of 24 different track configurations and stacking options available. The table in your Verosol Price Book easily identifies the various types on offer. Simply select your desired track type. The table will indicate if the configuration is a 2, 3, 4, or 5 panel track, and provides you with the total number of panels indicating how many are fixed. The control type is identified by 'W' for wand, 'C' for cord, or 'WC' where it is possible to have either wand or cord operation. Fixed panels are identified as a line with two endpoints, and movable panels are identified with an arrow head, and point in the direction they will open. The illustrations in the table identify stacking locations and possible control sides.			
Fabric Panels	Select a 2, 3, 4, or 5 panel track with your desired configuration type from the table. Divide the width of the track (in millimetres) by the number of panels to calculate the width of each fabric panel. To determine the final price for a complete system, multiply the number of panels by the price per panel and add the track price. Verosol will make an adjustment to your ordered fabric panel size, in order to provide you with an accurate overlap of 70mm.			
SPECIAL Extending the track past the window or door	To extend the track past the opening to allow panels to stack to one side without obstructing the view, please provide 2 measurements. A = Track Width, B = Fabric Coverage Width. Usually the configuration is wand operated without a fixed panel. Please consider when selecting the track configuration, and number of panels required for coverage.			

Turn over for system diagrams

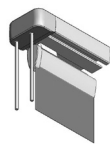
Panel Glide System

System Diagrams

Panel Glide System



Wand operation
[W]
L = 1000mm
L = 1250mm
L = 1500mm
black, white, grey



Cord operation
[C]

Visit Verosol Price List for more system diagrams