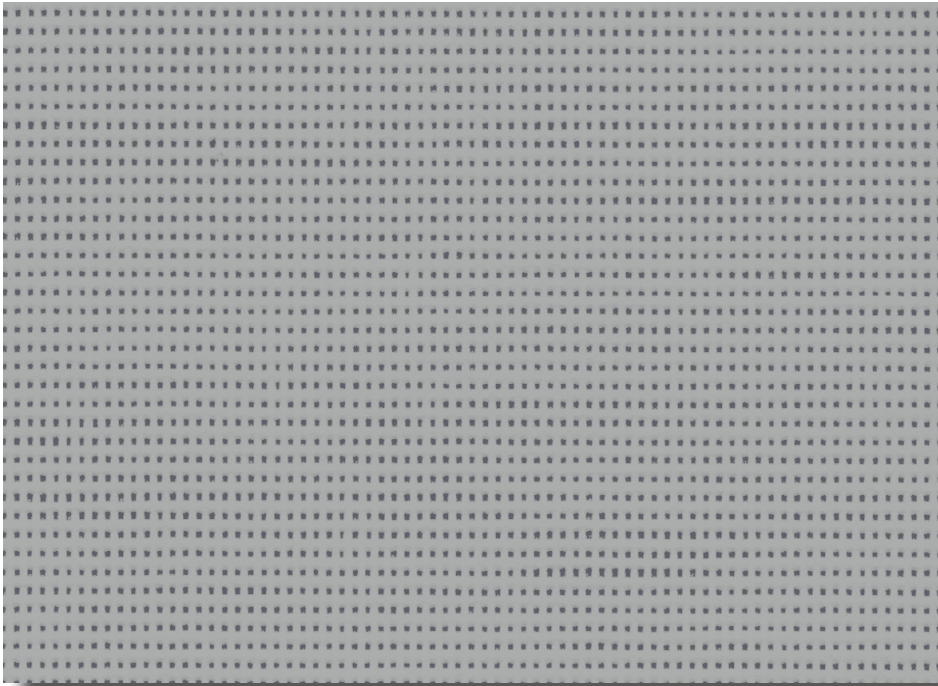


297 Soltis 86

Transparent



Flame Retardant



External Roller Blinds

Unrivalled outward visibility & natural light transmission beneficial to user well-being

Features

- Reduces heat transmission by blocking up to 86% of heat in outdoor use
- Reduces glare and provides UV protection
- Provides excellent transparency & provides outward visual contact to enjoy your view when blind is lowered
- Offers optimised natural light contribution, promoting natural light intake reducing the use of artificial light
- Co-ordinated colours available in Soltis 92 allowing visual comfort needs according to facade's orientation

Care Instructions


Keep the fabric clean by brushing regularly both on the top & underside with a soft brush. Rinse with clean water or wipe with a wet sponge. Allow the fabric to dry completely before it is rolled up. Do not use powered, high pressure washes or steam to clean fabric. Do not apply soaps, abrasive powders, detergents, cleaning fluids or insecticides.

For more information or to create your next specification visit verosol specifications.com.au or call **1800 721 404**



297 Soltis 86

Transparent

Fabric Density	Transparent				Tensile Strength [EN ISO 1421]	Warp: 230 daN / 50mm
Composition	38% Polyester / 62% Vinyl				Weft: 160 daN / 50mm	
Weight	380gsm ± 5%			Tear Strength [DIN 53.363]	Warp: 45 daN	
Thickness	0.45mm ± 5%			Weft: 20 daN		
Width	2670mm			Construction	PVC coated polyester - Preconstraint® Technology	
Flame Retardancy tested to [AS/NZS 1530.3-1999]	Ignitability Index	15 Range [0-20]		Complies with BCA General requirements		
	Spread of flame Index	0 Range [0-20]				
	Heat evolved Index	0 Range [0-20]				
	Smoke developed Index	6 Range [0-20]				
[AS/NZS 3837-1998]	Classification Group 1					
[International]	M1/NFP 92-507 M1/UNE23.727-90 BS 5867 BS 5867 B1/DIN 4102.1 Method 1/NFPA 701 Class A/ASTM E84					
Certification	Greenguard Gold	PVC Best Environmental Practice	ISO 9001			
Suitable Products	External Roller Blinds					

Fabric colour code	2044	2046 alu	2046 col	2135	2043	2048	2171	2045	2167	2068^ alu	2068^ col	2047	51176
Solar transmittance	29%	22%	22%	24%	15%	19%	22%	16%	17%	17%	17%	17%	14%
Solar reflectance outside	59%	40%	55%	39%	11%	39%	36%	29%	14%	31%	7%	7%	5%
Solar absorbance	12%	38%	23%	37%	74%	42%	42%	55%	69%	52%	76%	76%	81%
Luminous transmittance [VLT]	28%	21%	21%	22%	15%	19%	20%	16%	17%	17%	17%	17%	14%
Openness factor	14%	14%	14%	14%	14%	14%	14%	14%	14%	14%	14%	14%	14%

[EN 13363-2*]

G-Value [gtot] Glazing Type-D

G-Value [External Solar Factor gtot]	0.11	0.10	0.09	0.09	0.07	0.09	0.08	0.08	0.07	0.08	0.09	0.07	0.07
--------------------------------------	------	------	------	------	------	------	------	------	------	------	------	------	------

G-Value [Indoor Solar Factor gtot]	0.24	0.16	0.20	0.21	0.28	0.20	0.21	0.23	0.26	0.23	0.28	0.28	0.29
------------------------------------	------	------	------	------	------	------	------	------	------	------	------	------	------

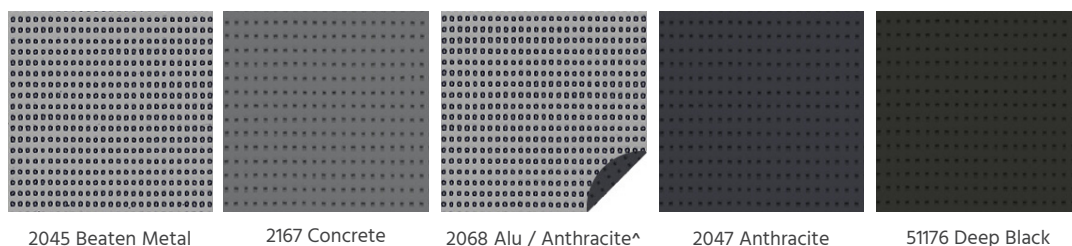
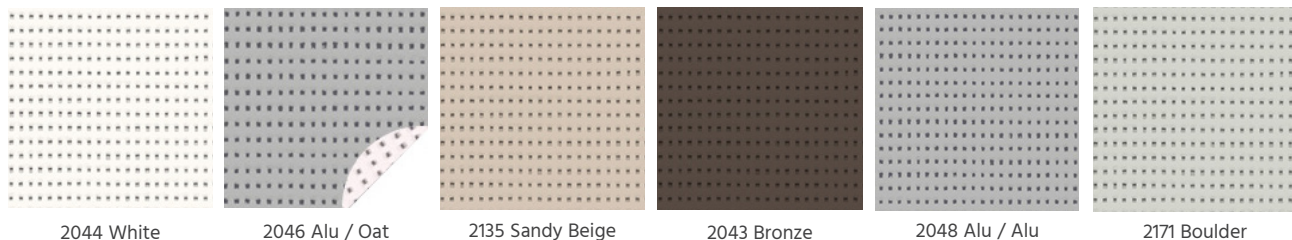
EN 13363-2*

Takes into account the spectral values of glazing transmission and reflection + blind complex for calculating the solar factor gtot.

Type "D" glazing: insulating double glazing with low emissivity on surface 2 (4 + 16 + 4; Argon filling) g = 0.32 - U = 1.1

^ 2068 only available in 1770mm width

Colour Range



^ 2068 only available in 1770mm width