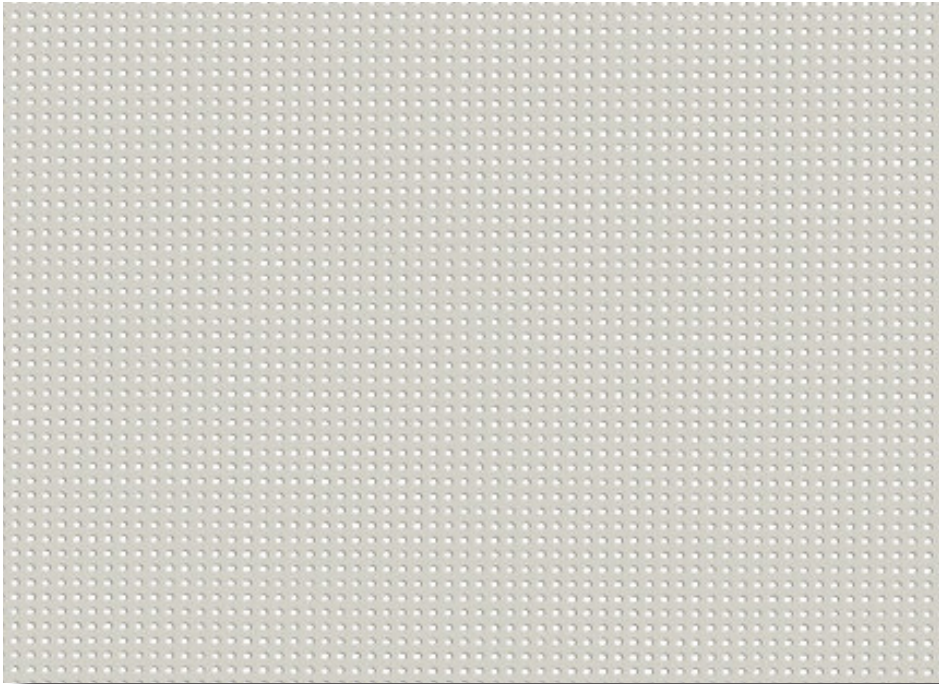


298 Soltis 88

Semi Transparent



Flame Retardant



External Roller Blinds

A perfect balance between design, transparency and thermal comfort

Features

- Reduces heat transmission by blocking up to 88% of heat in outdoor use
- Reduces glare and provides UV protection
- Provides excellent outward visibility
- Offers the perfect balance of natural light and retention of view, while reducing solar heat gain
- Soltis 88 provides visual comfort suitable for both indoor and outdoor use

Care Instructions


Keep the fabric clean by brushing regularly both on the top & underside with a soft brush. Rinse with clean water or wipe with a wet sponge. Allow the fabric to dry completely before it is rolled up. Do not use powered, high pressure washes or steam to clean fabric. Do not apply soaps, abrasive powders, detergents, cleaning fluids or insecticides.

For more information or to create your next specification visit verosol specifications.com.au or call **1800 721 404**



298 Soltis 88

Semi Transparent

| | | | | | |
|--|---|---------------------------------|---|--|-----------|
| Fabric Density | Semi Transparent | | | | |
| Composition | 29% Polyester / 71% Vinyl | |  | | |
| Weight | 360gsm ± 10% | | Tensile Strength [EN ISO 1421] | Warp: 140 daN / 50mm Weft: 145 daN / 50mm | |
| Thickness | 0.45mm ± 10% | | Tear Strength [DIN 53.363] | Warp: 14 daN Weft: 14 daN | |
| Width | 2670mm | | | | |
| Construction | PVC coated polyester - Prestraint® Technology | | | | |
| Flame Retardancy tested to [AS/NZS 1530.3-1999] | Ignitability Index | 17 Range [0-20] | Complies with BCA General requirements | | |
| | Spread of flame Index | 0 Range [0-20] | | | |
| | Heat evolved Index | 1 Range [0-20] | | | |
| | Smoke developed Index | 5 Range [0-20] | | | |
| [AS/NZS 3837-1998] | Classification Group 1 | | | | |
| [International] | M1/NFP 92-507 M1/UNE23.727-90 BS 5867 BS 5867 B1/DIN 4102.1 Method 1 and 2 /NFPA 701 Class A/ASTM E84 | | | | |
| Certification | Greenguard Gold | PVC Best Environmental Practice | ISO 9001 | ISO 14001 | ISO 50001 |
| Suitable Products | External Roller Blinds | | | | |

| Fabric colour code | 2044 | 2175 | 50265 | 2135 | 2012 | 2043 | 2048 | 2171 | 2167 | 2047 | 2053 |
|------------------------------|------|------|-------|------|------|------|------|------|------|------|------|
| Solar transmittance | 24% | 24% | 15% | 14% | 12% | 9% | 13% | 13% | 9% | 9% | 8% |
| Solar reflectance outside | 65% | 62% | 44% | 42% | 29% | 12% | 44% | 38% | 16% | 8% | 6% |
| Solar absorbance | 11% | 14% | 41% | 44% | 59% | 79% | 43% | 49% | 75% | 83% | 86% |
| Luminous transmittance [VLT] | 22% | 21% | 12% | 11% | 10% | 8% | 12% | 11% | 9% | 9% | 8% |
| Openness factor | 8% | 8% | 8% | 8% | 8% | 8% | 8% | 8% | 8% | 8% | 8% |

[EN52022-3*]

G-Value [gtot] Glazing Type-D

| | | | | | | | | | | | |
|--------------------------------------|------|------|------|------|------|------|------|------|------|------|------|
| G-Value [External Solar Factor gtot] | 0.13 | 0.12 | 0.08 | 0.08 | 0.07 | 0.07 | 0.08 | 0.08 | 0.07 | 0.07 | 0.07 |
|--------------------------------------|------|------|------|------|------|------|------|------|------|------|------|

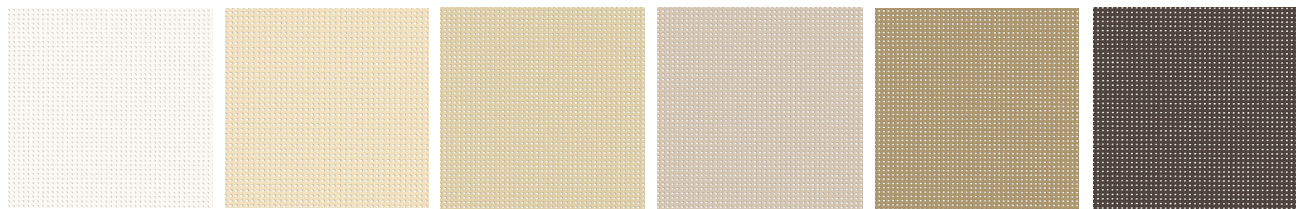
| | | | | | | | | | | | |
|------------------------------------|------|------|------|------|------|------|------|------|------|------|------|
| G-Value [Indoor Solar Factor gtot] | 0.12 | 0.14 | 0.20 | 0.20 | 0.23 | 0.28 | 0.19 | 0.20 | 0.26 | 0.28 | 0.29 |
|------------------------------------|------|------|------|------|------|------|------|------|------|------|------|

EN 52022-3*

Takes into account the transmission and reflection spectral values of the glazing/blind combination to calculate the gtot solar factor.

D-type glazing: insulating double glazing with 2-side low emissivity (4 + 16 + 4; Argon filled) g = 0.32 - U = 1.1.

Colour Range



2044 White

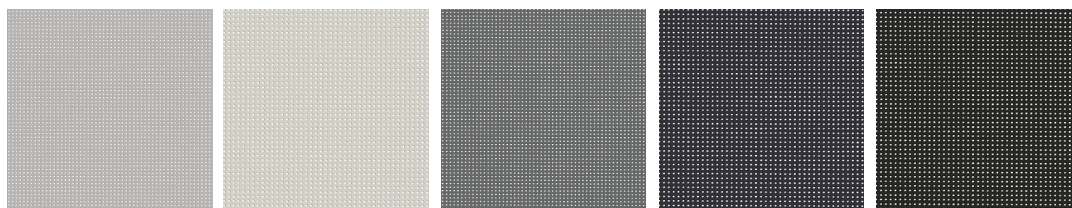
2175 Champagne

50265 Hemp

2135 Sandy Beige

2012 Pepper

2043 Bronze



2048 Alu / Alu

2171 Boulder

2167 Concrete

2047 Anthracite

2053 Black