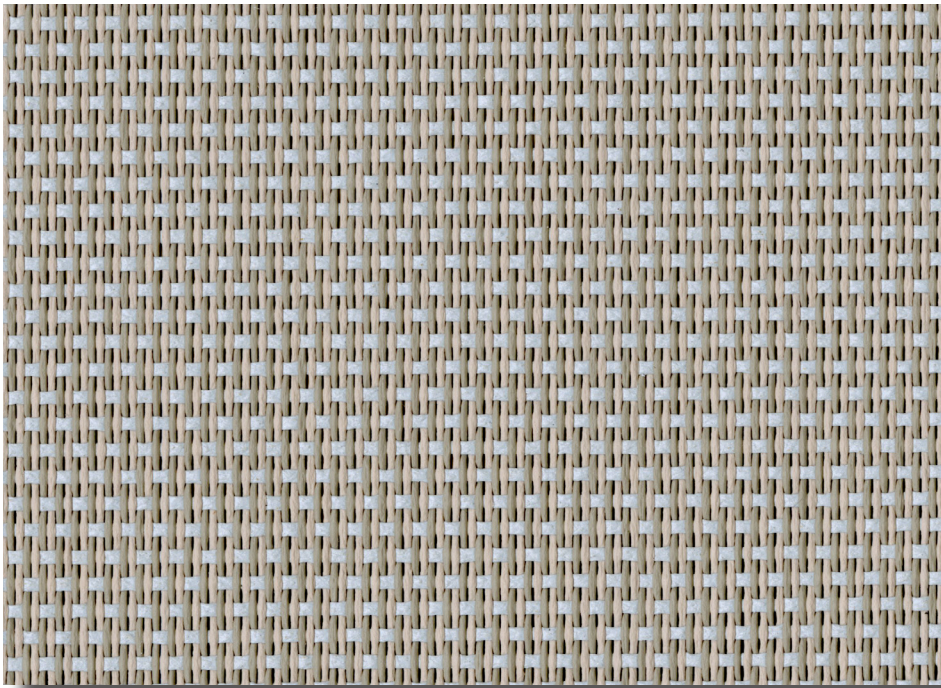


328 Soltis Veozip

Semi Transparent



Flame Retardant



External Roller Blinds

With unmatched transparency Veozip is the ideal fabric for enjoying your outdoor view

Features

- Veozip enables you to make the most of natural light while also benefiting from optimal thermal characteristics
- Reduces glare providing great visual comfort with great outward visibility
- Filters up to 95% of UV radiation
- Perfect integration into ZIP systems providing modern styling to your outdoor living areas

Care Instructions

Keep the fabric clean by brushing regularly both on the top & underside with a soft brush. Rinse with clean water or wipe with a wet sponge. Allow the fabric to dry completely before it is rolled up. Do not use powered, high pressure washes or steam to clean fabric. Do not apply soaps, abrasive powders, detergents, cleaning fluids or insecticides.

For more information or to create your next specification visit verosol specifications.com.au or call **1800 721 404**



328 Soltis Veozip

Semi Transparent

| | | | |
|--|--|-----------------------------------|--|
| Fabric Density | Semi Transparent | | |
| Composition | 25% Polyester / 74% Vinyl / 1% Hemp | Tensile Strength [EN ISO 1421] | Warp: 250 daN / 50mm |
| Weight | 600gsm ± 5% | | Weft: 170 daN / 50mm |
| Thickness | 0.90mm ± 5% | Tear Strength [DIN 53.363] | Warp: 25 daN |
| Width | 2900mm | | Weft: 25 daN |
| Construction | PVC coated polyester - Precontraint® Technology | | |
| Flame Retardancy tested to [AS/NZS 1530.3-1999] | Ignitability Index | 16 Range [0-20] | Complies with BCA General requirements |
| | Spread of flame Index | 0 Range [0-20] | |
| | Heat evolved Index | 1 Range [0-20] | |
| | Smoke developed Index | 6 Range [0-20] | |
| [International] | M1/NFP 92-507 BS 5867 BS 5867 B1/DIN 4102.1 Method 1/NFPA 701 Class A/ASTM E84 | | |
| Certification | Greenguard Gold | ISO 9001 | |
| Suitable Products | External Roller Blinds | | |

| Fabric colour code | 51186 | 51187 | 51188 | 51190 | 51191 | 51194 | 51195 | 51196 | 51197 | 51198 |
|--|-------|-------|-------|-------|-------|-------|-------|-------|-------|-------|
| Solar transmittance | 6% | 7% | 5% | 6% | 7% | 5% | 5% | 6% | 5% | 5% |
| Solar reflectance outside | 37% | 37% | 29% | 27% | 18% | 7% | 7% | 10% | 8% | 5% |
| Solar absorbance | 57% | 56% | 66% | 67% | 75% | 88% | 88% | 84% | 87% | 90% |
| Luminous transmittance [VLT] | 6% | 7% | 4% | 5% | 6% | 5% | 5% | 6% | 5% | 5% |
| Openness factor | 5% | 5% | 5% | 5% | 5% | 5% | 5% | 5% | 5% | 5% |
| [EN 13363-2*] G-Value [gtot] Glazing Types: C and D | | | | | | | | | | |
| G-Value [External gtot] Type-C | 0.06 | 0.06 | 0.05 | 0.05 | 0.06 | 0.06 | 0.05 | 0.06 | 0.05 | 0.06 |
| G-Value [External gtot] Type-D | 0.04 | 0.04 | 0.03 | 0.04 | 0.04 | 0.04 | 0.04 | 0.04 | 0.04 | 0.04 |

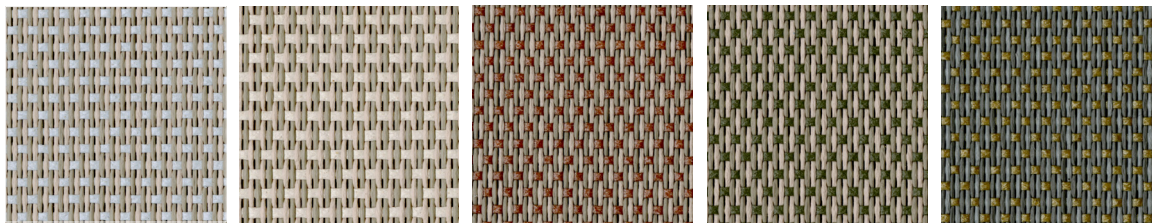
EN 13363-2*

Takes into account the spectral values of glazing transmission and reflection + blind combination for calculating the solar factor gtot.

Type "C" glazing: Low emission, insulating double glazing - face 3 (4 + 16 + 4; argon-filled) g = 0.59 - U = 1.2

Type "D" glazing: Low emission, insulating double glazing - face 2 (4 + 16 + 4; argon-filled) g = 0.32 - U = 1.1

Colour Range



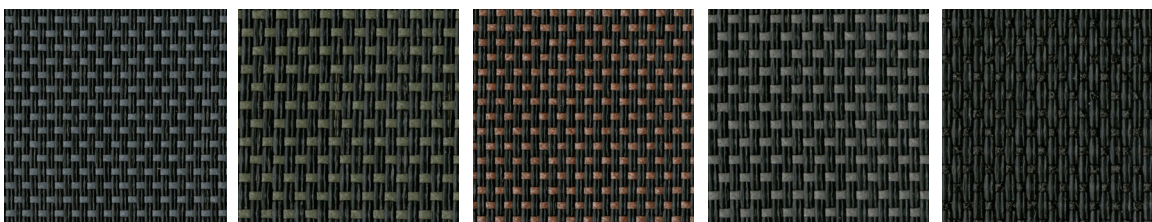
51186 Cumulus

51187 Natural

51188 Macadamia

51190 Tundra

51191 Lunar Surface



51194 Shadow

51195 Volcano

51196 Sandalwood

51197 Grey Pepper

51198 Graphite Black