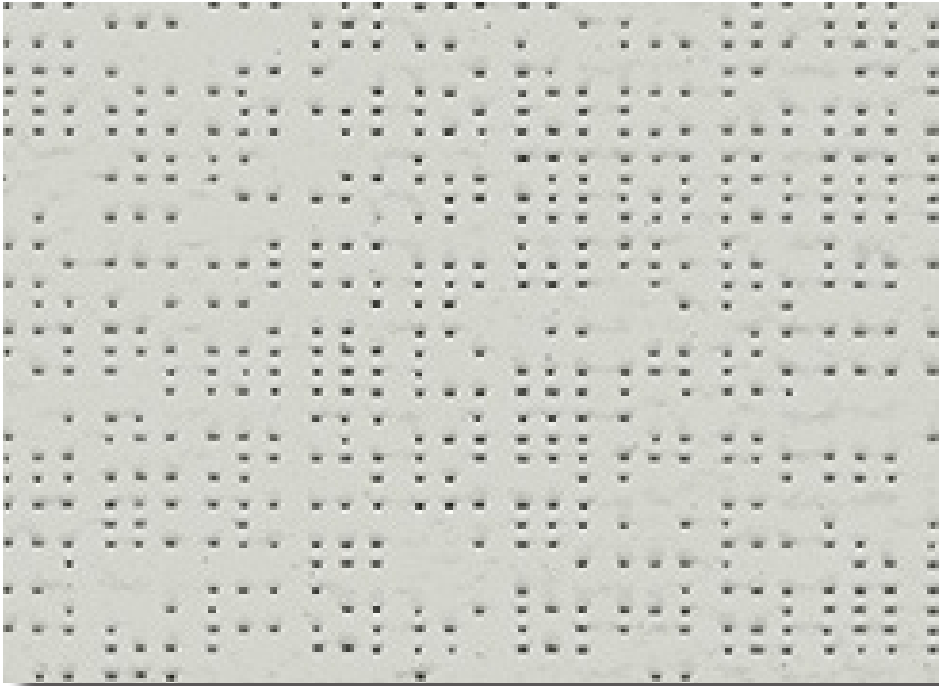


284 Soltis 92

Semi Transparent



Flame Retardant



External Roller Blinds

Soltis 92 acts as an effective thermal shield blocking up to 97% of the heat

Features

- Reduces heat transmission by blocking up to 97% of heat in outdoor use
- Reduces glare and provides UV protection
- Offers a balance between natural light and retention of view, while reducing solar heat gain
- Soltis 92 provides visual comfort and maximum thermal performance

Care Instructions

Keep the fabric clean by brushing regularly both on the top & underside with a soft brush. Rinse with clean water or wipe with a wet sponge. Allow the fabric to dry completely before it is rolled up. Do not use powered, high pressure washes or steam to clean fabric. Do not apply soaps, abrasive powders, detergents, cleaning fluids or insecticides.

For more information or to create your next specification visit verosol specifications.com.au or call **1800 721 404**



284 Soltis 92

Semi Transparent



Fabric Density	Semi Transparent		
Composition	43% Polyester / 57% Vinyl		Tensile Strength [EN ISO 1421]
Weight	420gsm ± 5%		Warp: 310 daN / 50mm Weft: 210 daN / 50mm
Thickness	0.45mm ± 5%		Tear Strength [DIN 53.363]
Width	2670mm		Warp: 45 daN Weft: 20 daN
Construction	PVC coated polyester - Preconstraint® Technology		
Flame Retardancy tested to [AS/NZS 1530.3-1999]	Ignitability Index	16 Range [0-20]	Complies with BCA General requirements
	Spread of flame Index	0 Range [0-20]	
	Heat evolved Index	1 Range [0-20]	
	Smoke developed Index	6 Range [0-20]	
[AS/NZS 3837-1998]	Classification Group 1		
[International]	M1/NFP 92-507 M1/UNE23.727-90 BS 5867 BS 5867 B1/DIN 4102.1 Method 1/NFPA 701 Class A/ASTM E84		
Certification	Greenguard Gold	PVC Best Environmental Practice	ISO 9001
Suitable Products	External Roller Blinds		

Fabric colour code	2044	2051 alu	2051 col	50265	2135	2043	2048	2171	2045	2074 alu	2074 alu	2167	2068^ alu	2068^ col	2047	51176
Solar transmittance	19%	12%	12%	9%	11%	4%	8%	8%	4%	4%	4%	6%	4%	4%	5%	3%
Solar reflectance outside	68%	49%	70%	49%	46%	13%	46%	41%	35%	37%	25%	19%	34%	8%	8%	5%
Solar absorbance	13%	39%	18%	42%	43%	83%	46%	51%	61%	59%	71%	75%	62%	88%	87%	92%
Luminous transmittance [VLT]	17%	11%	11%	6%	8%	4%	8%	6%	4%	4%	4%	5%	4%	4%	5%	3%
Openness factor	4%	4%	4%	4%	4%	4%	4%	4%	4%	4%	4%	4%	4%	4%	4%	4%

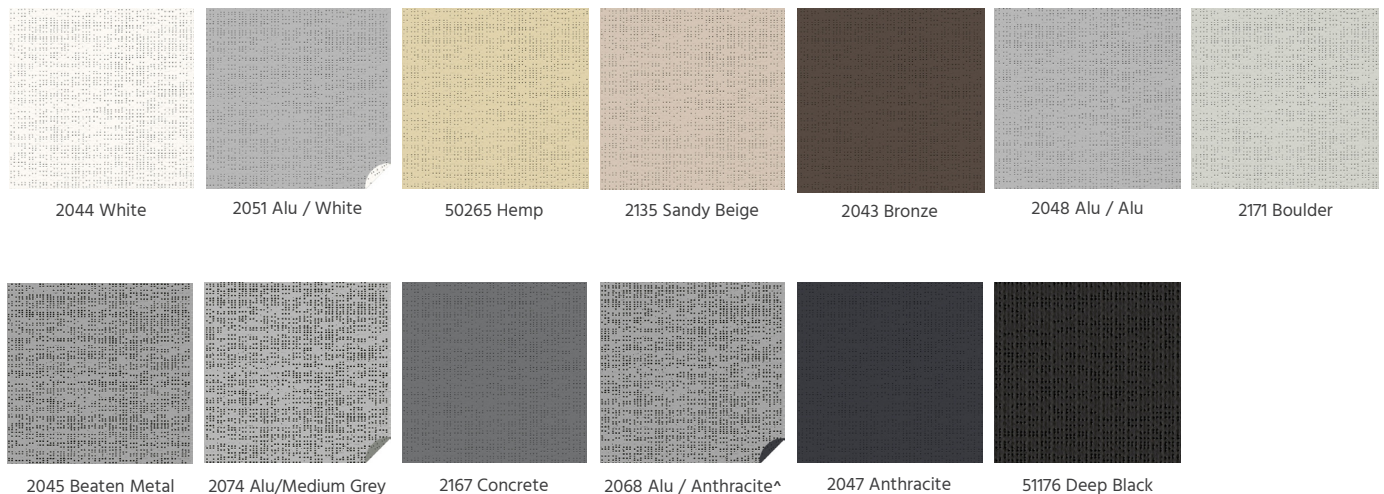
[EN 13363-2*]
G-Value [gtot] Glazing Type-D

G-Value [External Solar Factor gtot]	0.07	0.06	0.05	0.04	0.04	0.04	0.04	0.04	0.03	0.03	0.03	0.04	0.03	0.04	0.04	0.03
G-Value [Indoor Solar Factor gtot]	0.11	0.17	0.10	0.18	0.19	0.28	0.18	0.20	0.22	0.21	0.24	0.26	0.22	0.28	0.28	0.29

EN 13363-2*
Takes into account the spectral values of glazing transmission and reflection + blind complex for calculating the solar factor gtot.
Type "D" glazing: insulating double glazing with low emissivity on surface 2 (4 + 16 + 4; Argon filling) g = 0.32 - U = 1.1

^ 2068 only available in 1770mm width

Colour Range



^ 2068 only available in 1770mm width